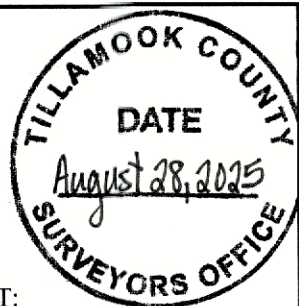


LINCOLN COUNTY CORNER REPORT
1/4 CORNER COMMON TO SECTIONS 14 AND 23,
T06S R11W, W. M.
GCDB (0611)540400
PAGE 1 OF 3



1872 ORIGINAL GLO SURVEY – CONTRACT NUMBER 166 – BY JOHN MELDRUM
SET POST FOR 1/4 COR FROM WHICH A SPRUCE 9 IN. DIAM. BEARS N80°E 48 LKS. DIST:

MAY 1930, CS F-2916 TILLAMOOK COUNTY SURVEY RECORDS – SURVEY FOR “3 ROX” AN UNRECORDED SUBDIVISION BY W. E. ANDERSON, COUNTY SURVEYOR OF TILLAMOOK COUNTY.

3" IRON PIPE, 813.9' WEST TO A 3" IRON PIPE MC

SEPTEMBER 1932, CS 5838, LINCOLN COUNTY SURVEY RECORDS CS A-111 TILLAMOOK COUNTY SURVEY RECORDS – BY W. S. COATES, CO. ENGR. (PRESUMABLY OF TILLAMOOK COUNTY).

SURVEY OF JAS. SAVAGE COUNTY ROAD. INDICATES 1/4 COR AND COORDINATES TIE TO ROAD TO STATE HWY (J. A. WEST ROAD) SEE ALSO DV 65, P 487 AND 488, DATED OCTOBER 1932, LINCOLN COUNTY DEED RECORDS, FOR DEEDED RIGHT OF WAY APPARENTLY BASED UPON THIS SURVEY.

FEB. 1946 – MAP F-0913 TILLAMOOK COUNTY SURVEY RECORDS- S. B. UNANDER WATERRIGHT- BY W. E. ANDERSON
1/4 COR I.P.

MARCH 1946 – PLAT OF THREE ROCKS AT SALMON RIVER BAY – BY W. E. ANDERSON

INITIAL POINT 2 1/2" I. PIPE, 1/4 COR ON THE COUNTY LINE SEC. 14, TWP 6 S, R11W, WM

NOV. 1954 – CS A-589 - TILLAMOOK COUNTY SURVEY RECORDS – BY W. E. ANDERSON

1/4 COR 3" I. PIPE

SEPTEMBER 1959, CS A-819, TILLAMOOK COUNTY SURVEY RECORDS – JOHN L. CARLICH
COORDINATE TIES TO 1/4 COR 14/23.

FEBRUARY 24, 1967, CS B-532 (TILLAMOOK COUNTY) SURVEY FOR D. M. LOWELL - BY LESTER E FULTZ
FD 2" IP

NOV. 28, 1967 – TILLAMOOK COUNTY REWITNESS NOTES – LINCOLN COUNTY CS 4138 – J. L. CARLICH, COUNTY SURVEYOR, TILLAMOOK COUNTY.

FOUND: 1 1/2" IP SET BY W. E. ANDERSON FOR COR (1940)
FALLEN OVER SNAG 30" SPR SNAG N80E 31.5'
FENCE E 1.5 FEET
NEW ACCESSORY:
20" ALDER S52°W 15.24
28" ALDER N30°W 51.62

MARCH 11, 1969 – CS A-1713 TILLAMOOK COUNTY SURVEY RECORDS – SURVEY FOR CASCADE HEAD RANCH – BY LESTER E. FULTZ
FD 1/4 CORNER

JUNE 1972 – TILLAMOOK COUNTY REWITNESS CARD #1022 – G. ARTHUR
SET 2" IRON PIPE WITH 3" BRASS CAP IN 10" TILE AND CONCRETE IN PLACE OF FOUND 1 1/2" IRON PIPE
FOUND - OK - 1972 * 20" ALDER S52°W 15.24
FOUND - OK - 1972 * 28" ALDER N30°W 51.62

JUNE 1973 – CS B-640 TILLAMOOK COUNTY SURVEY RECORDS- FOR CASCADE HEAD RANCH – BY LESTER E. FULTZ
SHOWS 1/4 COR. AND INDICATES A SET 1/2" ROD N45°W 110.0'

SPRING 1974 – SURVEY OF PROPOSED SAVAGE ROAD – CS B-0660, TILLAMOOK COUNTY SURVEY RECORDS – CS 15636 LINCOLN COUNTY SURVEY RECORDS - BY JOHN L. CARLICH

1/4 COR, FOUND TILLAMOOK COUNTY BRASS CAP IN CONCRETE.
S89°21'17"W 813.54' TO MEANDER CORNER.

JUNE 1981, CS 9617 LINCOLN COUNTY SURVEY RECORDS – SURVEY FOR LOUISE MORLEY – BY CHARLES A. DENISON
FOUND 1/4 CORNER BRASS CAP 1972 IN CONCRETE
BT'S FD: 20" ALDER S26°E 52.5'
16" ALDER N56°E 15.9'

NOTE: IT APPEARS THE ABOVE BEARINGS REPORTED FOR THE BT'S WERE REVERSED, BEING FROM THE BT'S TO THE CORNER.

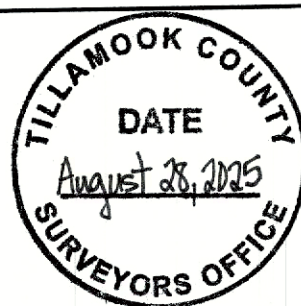
REGISTERED
PROFESSIONAL
LAND SURVEYOR

Eathan D. Nicley

OREGON
FEBRUARY 08, 2000
EATHAN D. NICLEY
54725PLS

RENEWS: DEC. 31, 2026

LINCOLN COUNTY CORNER REPORT
1/4 CORNER COMMON TO SECTIONS 14 AND 23,
T06S R11W, W. M.
GCDB (0611)540400
PAGE 2 OF 3



APRIL 1989, CS 12512 - FOR STAN AND CATHY JOHNSON - BY JAMES A. PAETH
N 1/4 CORNER (6-11-23) BRASS CAP

1995 US CBLM - DEPENDENT RESURVEY - GROUP NUMBER 1743 - BY ROBERT W. DAHL

DAHL'S NOTES ARE COPIED AND PASTED BELOW

The 1/4 sec. cor. of secs. 14 and 23, perpetuated by W.E. Anderson, Tillamook County Surveyor, in 1930, and recorded as Tillamook County Survey Record F29-16; and further perpetuated by John L. Carlich, Registered Land Surveyor No. 287, in 1972, and recorded as Tillamook County Survey Rewitness No. 1022 and as Lincoln County Survey No. 4138; monumented with a concrete post, 8 ins. diam., and encased in a clay tile pipe, firmly set, projecting 1 in. above ground, with brass cap mkd.

TILLAMOOK COUNTY SURVEY MARK
TILLAMOOK
S 14
—
S 23
LINCOLN
RS 287
1972

from which remains of an original bearing tree

A spruce snag, 30 ins. diam., bears N. 80° E., 48 lks. dist., no marks visible.

and the bearing trees mkd. by Tillamook County Surveyor's Office, in 1967, and recorded as Tillamook County Survey Rewitness No. 1022 and as Lincoln County Survey No. 4138

An alder, 23 ins. diam., bears S. 56° W., 24 lks. dist., with scribe marks 1/4 S23 BT TCS visible in bark.

An alder, 38 ins. diam., bears N. 30° W., 78 lks. dist., with scribe marks 1/4 S14 BT TCS visible in bark.

Corner is located in an old barbed wire fence and under overhead utility lines, both bear E. and W.

JULY 8, 1999, CS 15902- FOR KATHLEEN JOHNSON- BY DARIUS K. FERGUSON
2-1/2" I.P. INITIAL POINT "THREE ROCKS" 1/4 CORNER SOUTH LINE SECTION 24.

MARCH 2024 - LINCOLN COUNTY SURVEYOR'S OFFICE
PERSONNEL VISITED CORNER

FOUND: A 3" TILLAMOOK COUNTY BRASS CAP AS SHOWN
IN CONCRETE SET IN A VERTICAL TERRA COTTA DRAIN TILE,
TOP FLUSH WITH GROUND.

FROM WHICH:

2 CARSONITE POSTS: ONE BEARS N20°E 0.6', ANOTHER BEARS N 0.45'.

A RUSTY METAL T-POST BEARS EAST 0.9'.

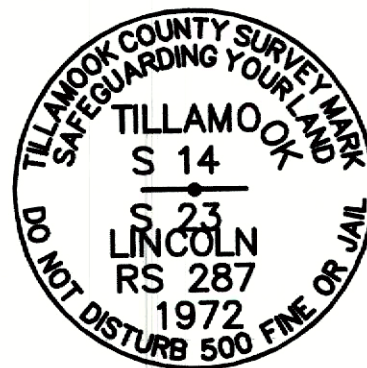
AN ALUMINUM POST WITH A CORNER SIGN BEARS EAST 1.5'.

A 24" ALDER WHICH LEANS SOUTH WITH A BT TAG FACING THE CORNER AND A USFS 54-9 SIGN ON THE BACK, ALSO THERE IS AN UNLETTERED RED AND WHITE SIGN GROWN INTO THE BARK, AND VISIBLE BARK SCRIBES, BEARS S56°W 15.9' TO APPROXIMATE CENTER. (CS 4138 RECORD S52°W 15.24').

A POWER POLE BEARS S89°17'W 99.0'.

A 1/2" IRON ROD TOP 0.3' BELOW SURFACE BEARS N49°08'19"W 109.90'. POSSIBLY FROM THE VILLAGE AT CASCADE HEAD RANCH, PHASE I, TILLAMOOK COUNTY PLAT RECORDS = (RECORD FROM SAID PLAT IS N45°00'W 110.0').

A 45" ALDER WITH A BT TAG AND AN UNLETTERED RED AND WHITE SIGN GROWN INTO THE BARK BEARS N30°W 51.9' TO APPROXIMATE CENTER. (CS 4138 RECORD N30°W 51.62').



REGISTERED
PROFESSIONAL
LAND SURVEYOR

Eathan D. Nicley

OREGON
FEBRUARY 08, 2000
EATHAN D. NICLEY
54725PLS

RENEWS: DEC. 31, 2026

LINCOLN COUNTY CORNER REPORT
1/4 CORNER COMMON TO SECTIONS 14 AND 23,
T06S R11W, W. M.
GCDB (0611)540400
PAGE 3 OF 3

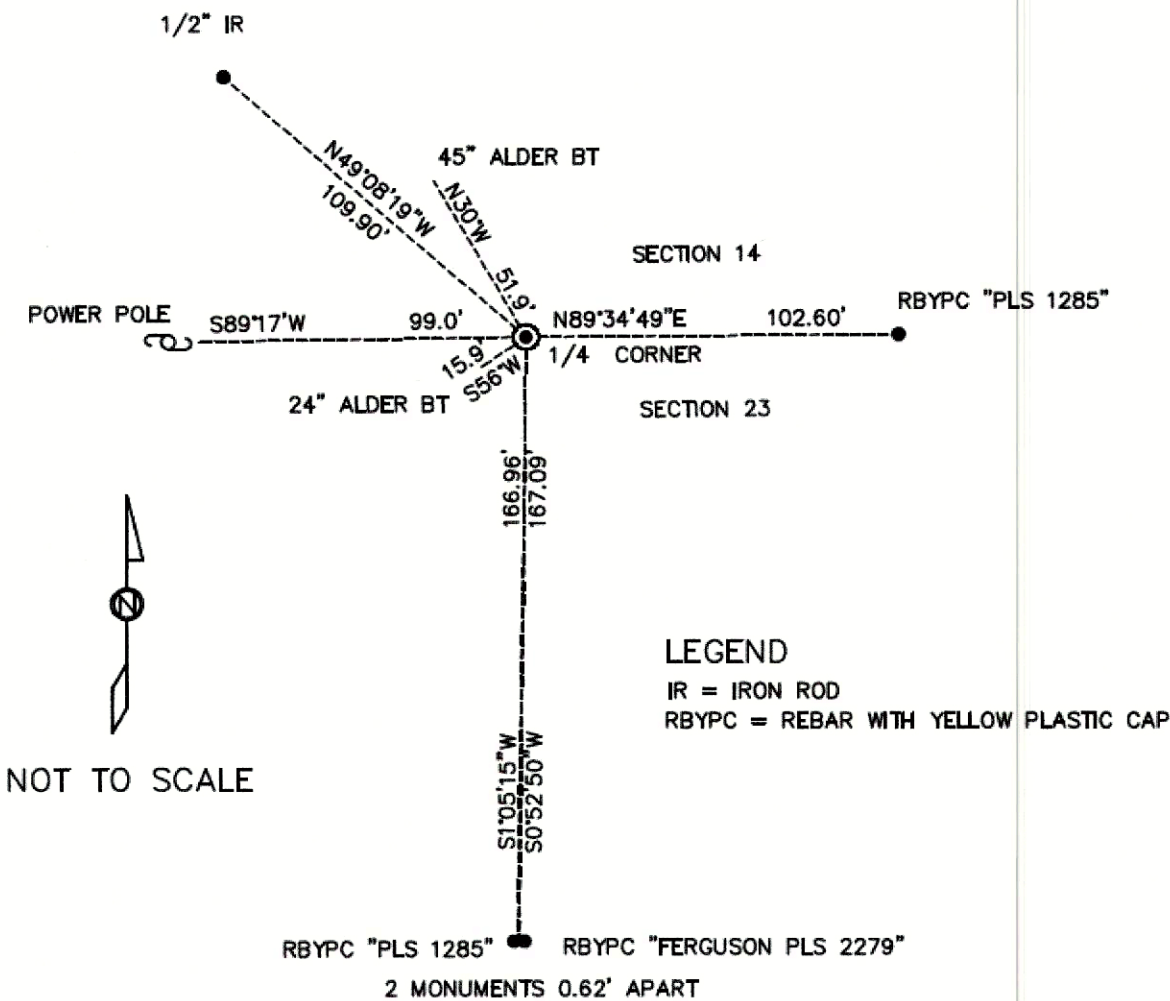
AN IRON ROD WITH A YELLOW PLASTIC CAP MARKED "PLS 1285", TOP 0.5' ABOVE GROUND BEARS N89°34'49"E 102.60'. SEE CS 12512. (CS 12512 RECORD = EAST 103.0'). THIS MONUMENT IS MARKED WITH A CARSONITE POST 0.3' NORTH.

AN IRON ROD WITH A 1" YELLOW PLASTIC CAP MARKED "FERGUSON PLS 2279" BEARS S0°52'50"W 167.09'. SEE CS 15902.

AN IRON ROD WITH A YELLOW PLASTIC CAP MARKED "PLS 1285", TOP 0.58' ABOVE GROUND BEARS S1°05'15"W 166.96'. SEE CS 12512. (RECORD CALCULATED FROM CS 12512 = S1°27'32"W 167.11').

THE MEANDER CORNER TO SECTIONS 14 AND 23 (LINCOLN COUNTY GEODETIC CONTROL POINT 9091) BEARS S89°21'03"W 813.48'. (RECORD ON TILLAMOOK COUNTY CS B-660 = S89°21'17"W 813.54'). (RECORD = WEST 813.9' PER MAY 1930 UNRECORDED PLAT OF "3 ROX", BY W. E. ANDERSON, TILLAMOOK COUNTY SURVEYOR, TILLAMOOK COUNTY SURVEY RECORDS F-2916).

CORNER IS BELOW OVERHEAD POWER LINES.



NOTE:
BEARINGS MEASURED TO ACCESSORIES ARE TRUE BEARINGS
BASED UPON TIES TO LINCOLN COUNTY GEODETIC CONTROL
MONUMENTS 9091 AND AZ9091.

ANALYSIS AND CONCLUSIONS
THIS CORNER IS A PERPETUATION OF THE ORIGINAL.

WITNESSES: EATHAN D. NICLEY – PLS
AARON M. OLSON

LINCOLN COUNTY SURVEYOR'S OFFICE
880 NE 7TH STREET
NEWPORT, OREGON 97365
541-265-4147



REGISTERED
PROFESSIONAL
LAND SURVEYOR

Eathan D. Nicley

OREGON
FEBRUARY 08, 2000
EATHAN D. NICLEY
54725PLS

RENEWS: DEC. 31, 2026